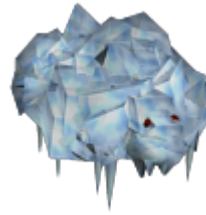


Ice Beast

The Ice Beast is not its own species of creature, but instead a unique genetic mutation observed to exist within various different species of the cosmos. Affecting the sweat glands and hair follicles of animalia, this mutation denies bodies the regulation of their own pores. Forced to retreat to the coldest regions of space, or else perish, Ice Beasts come to be plated with a thick outer carapace which appear to be made of scales of pure ice, a veritable tank like armor.



Locations

Ice Beasts can be found on nebula tiles, or occasionally fuel tiles next to a nebula tile, all over the universe.

Stats

Skills

Tactics	50
Hit accuracy	40
Maneuver	35
Weaponry	40
Engineering	45

Health

Hull	
Armour	

Armour strength	
Armour type	
Shield	
Shield regeneration	
Total health	

Other

XP for killing	
Loot from killing	
Roams?	
Cloaks?	
Retreat hold frequency	
Retreat hold rounds	
Respawn time	
Old age death time	

Weapons

Guns

Gun	Base damage	Shots per round	Total damage	Weapon type

Missiles

Missile	Base damage	Average reload time

Revision #2

Created 3 October 2025 19:18:34 by Admin

Updated 7 October 2025 21:54:48 by Admin